

Plastic Cards with a brilliant, crystal clear compressed gloss lamination

- Price is based on supplied artwork.
- Templates available on the Plastic Cards/Card Holders page of our website.
- Production time is 6 - 7 business days after artwork approval (time will vary for larger orders).
- Signature strip and numbering available: Price upon request.
- A PDF proof will be emailed to you before production begins.

- Uses:
- cash cards
 - loyalty cards
 - courtesy cards
 - badges
 - tags and much more

- 3 3/8" x 2 1/8" with rounded corners (credit card size)
- 3 1/2" x 2" with rounded corners (business card size)
- 3 7/16" x 2 3/16" with rounded corners & oblong hole



Digital printed in full colour (CMYK)

30pt thick - 100lb paper card stock with gloss lamination both sides (short term use)

	Price per unit					
	100-249	250-499	500-999	1000-2499	2500-4999	5000+
Full colour, 1 side	1.72	1.07	.71	.47	.34	.30
Full colour/black, 2 sided	1.83	1.12	.76	.51	.37	.32
Full colour, 2 sided	1.93	1.19	.81	.56	.41	.36

6F

28pt thick - Polyester base with gloss lamination both sides (waterproof, durable, long lasting)

	Price per unit					
	100-249	250-499	500-999	1000-2499	2500-4999	5000+
Full colour, 1 side	1.87	1.20	.83	.59	.45	.41
Full colour/black, 2 sided	1.97	1.25	.87	.64	.48	.44
Full colour, 2 sided	2.08	1.32	.92	.68	.53	.47

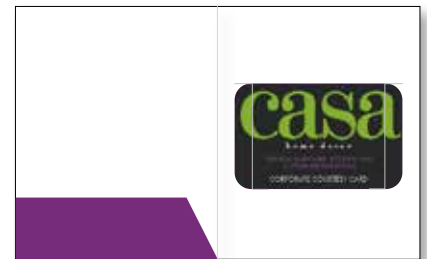
6F



Card Pocket Folders

- Price is based on supplied artwork.
- Templates available on the Plastic Cards/Card Holders page of our website.
- Printed on white 120lb gloss card stock. Price does not include plastic card.
- Production time is 6 - 7 business days after artwork approval (time will vary for larger orders).
- A PDF proof will be emailed to you before production begins.

- 4" x 4 1/2" folder with 1 pocket (1 1/2" deep) and card slits on inside.
- 4" x 5" folder with 1 pocket (1 1/2" deep) and card slits on inside.



Digital printed / Offset printed

	Price per unit					
	100-249	250-499	500-999	1000-2499	2500-4999	5000+
Full colour	2.79	1.45	1.15	.89	.59	.46

6H

Extra charges:

- **Design work, resizing or making changes to your supplied artwork:** \$80.00 / hour.
- **Multiple images, copy changes and/or colour changes:** \$20.00 (G) per group run. Use the unit price for the total amount ordering.
- **Pre-production sample:** Price upon request.
- **Custom shapes and sizes:** Price upon request.
- **Custom packaging:** Price upon request otherwise bulk packaged.
- **Rush service.**
- **Shipping and taxes.**



Outside front

Card Holders

- Price is based on supplied artwork.
- Templates available on the Plastic Cards/Card Holders page of our website.
- Printed on 10pt C1S card stock.
- Production time is 6 - 7 business days after artwork approval (time will vary for larger orders).
- Price does not include plastic card.
- A PDF proof will be emailed to you before production begins.

- 4 1/8" x 2 7/8" (when folded) with card slits on right hand side.



Digital printed - outside printed in full colour & inside printed in black

	Price per unit					
	100-249	250-499	500-999	1000-2499	2500-4999	5000+
Card Holders	1.28	.79	.62	.49	.40	.31

6H

Card Sleeves

- Price is based on supplied artwork.
- Templates available on the Plastic Cards/Card Holders page of our website.
- Printed on 80lb gloss card stock.
- Production time is 6 - 7 business days after artwork approval (time will vary for larger orders).
- Price does not include plastic card.
- A PDF proof will be emailed to you before production begins.
- Tear proof/waterproof stocks: Price upon request.

- 3 1/2" x 2 1/4". Two styles to choose from.

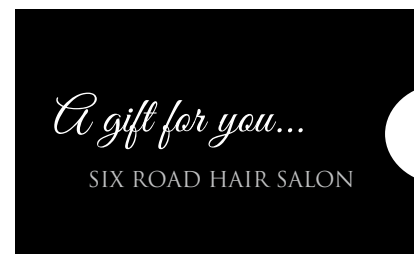
Digital printed / Offset printed

	Price per unit					
	100-249	250-499	500-999	1000-2499	2500-4999	5000+
Full colour	2.52	1.34	.89	.71	.56	.46

6H



Style #1



Style #2

Extra charges:

- **Design work, resizing or making changes to your supplied artwork:** \$80.00 / hour.
- **Multiple images, copy changes and/or colour changes:** \$20.00 (G) per group run. Use the unit price for the total amount ordering.
- **Pre-production sample:** Price upon request.
- **Custom shapes and sizes:** Price upon request.
- **Custom packaging:** Price upon request otherwise bulk packaged.
- **Rush service.**
- **Shipping and taxes.**