

Paper Coasters - Coaster board (Also known as pulp board or beer mat board)

- Price includes set up charges.
- Production time is 6 to 8 business days after artwork approval (production time may vary for larger orders).
- Contact us for a quote for custom shapes, larger quantities, offset printing, embossing & foil stamping.
- Extra charges may apply when artwork has borders printed on both sides of coasters. Contact us for details.

Artwork Guidelines:

- Templates available on the Coaster page of our website.

- Light weight (18pt / .5mm approx.)
- Medium weight (40pt / 1mm approx.)
- Heavy weight (60pt / 1.5mm approx.)
- Extra heavy weight (80pt / 2mm approx.)

Square cut - 3.5"x3.5" & 4"x4"

Digital printed in full colour (CMYK)

Price per unit

	100	250	500	1000	2500	5000
18pt - 1 sided	.59	.36	.28	.26	.23	.20
18pt - 2 sided	.96	.61	.48	.46	.37	.30
40pt - 1 sided	.76	.50	.42	.40	.36	.33
40pt - 2 sided	1.36	.96	.83	.64	.54	.46
60pt - 1 sided	.84	.59	.49	.43	.39	.36
60pt - 2 sided	1.46	1.06	.91	.83	.71	.63
80pt - 1 sided	1.25	.84	.63	.51	.47	.44
80pt - 2 sided	1.81	1.23	1.08	.91	.80	.71

- Multiple images: An extra charge of \$20.00 (G) is added per group run. Use the unit price for the total amount ordering. Contact us for more details.
- Packaging: 1 to 5 coasters per poly bag - \$.30 (G) per bag.
- Extra charges may apply when artwork has borders on both sides of coasters. Contact us for details.

Square cut



Puzzle - 8" x 8" (4 - 4" pieces)

Digital printed in full colour (CMYK)

Price per unit

	100	250	500	1000	2500	5000
40pt - 1 sided	2.91	1.89	1.56	1.44	1.08	1.01
60pt - 1 sided	3.45	2.15	1.72	1.63	1.21	1.12

- Multiple images: An extra charge of \$20.00 (G) is added per group run. Use the unit price for the total amount ordering. Contact us for more details.



Paper Coasters - Coaster board (Also known as pulp board or beer mat board)

- Price includes set up charges.
- Production time is 6 to 8 business days after artwork approval (production time may vary for larger orders).
- Contact us for a quote for custom shapes, larger quantities, offset printing, embossing & foil stamping.
- Extra charges may apply when artwork has borders printed on both sides of coasters. Contact us for details.

Artwork Guidelines:

- Templates available on the Coaster page of our website.

- Light weight (18pt / .5mm approx.)
- Medium weight (40pt / 1mm approx.)
- Heavy weight (60pt / 1.5mm approx.)
- Extra heavy weight (80pt / 2mm approx.)

Round - 3.5" & 4"

Square with rounded corners - 3.5"x3.5" & 4"x4"

Octagon - 4"

Digital printed in full colour (CMYK)

Price per unit

	100	250	500	1000	2500	5000
18pt - 1 sided	.95	.53	.38	.35	.28	.23
18pt - 2 sided	1.37	.81	.60	.56	.43	.33
40pt - 1 sided	1.26	.74	.55	.52	.44	.37
40pt - 2 sided	1.92	1.22	.96	.76	.62	.50
60pt - 1 sided	1.73	.98	.69	.57	.48	.41
60pt - 2 sided	2.99	1.74	1.28	1.05	.85	.72
80pt - 1 sided	---	---	.93	.77	.59	.51
80pt - 2 sided	---	---	1.45	1.41	1.06	.87



Round

- Multiple images: An extra charge of \$20.00 (G) is added per group run. Use the unit price for the total amount ordering. Contact us for more details.
- Packaging: 1 to 5 coasters per poly bag - \$.30 (G) per bag.
- Extra charges may apply when artwork has borders on both sides of coasters. Contact us for details.

6F

Square with rounded corners



Octagon



Paper Coasters - Brown kraft chip board (Made from 100% recycled materials)

- Price includes set up charges.
- Production time is 6 to 8 business days after artwork approval (production time may vary for larger orders).
- Contact us for a quote for custom shapes, larger quantities & offset printing.
- Extra charges may apply when artwork has borders printed on both sides of coasters. Contact us for details.
- Colours darken when printed on kraft chip board. Large, solid areas can appear mottled because of the vellum finish. Black artwork reproduces the best.

Artwork Guidelines:

- Templates available on the Coaster page of our website.

- Light weight (18pt / .5mm approx.)
- Medium weight (40pt / 1mm approx.)
- Heavy weight (60pt / 1.5mm approx.)
- Extra heavy weight (80pt / 2mm approx.)

Digital printed in full colour (CMYK)

Square cut - 3.5"x3.5" & 4"x4"

Price based on light coverage

	Price per unit					
	100	250	500	1000	2500	5000
18pt - 1 sided	.59	.36	.28	.26	.23	.20
18pt - 2 sided	.96	.61	.49	.46	.37	.29
40pt - 1 sided	.76	.51	.43	.41	.37	.34
40pt - 2 sided	1.36	.95	.82	.63	.53	.45
60pt - 1 sided	.88	.63	.52	.46	.42	.39
60pt - 2 sided	1.50	1.09	.93	.86	.73	.65
80pt - 1 sided	1.27	.86	.65	.53	.49	.46
80pt - 2 sided	2.06	1.42	1.11	.95	.83	.74

6F



Square cut



Round



Square with rounded corners

Round - 3.5" & 4" / Octagon - 4"

Square with rounded corners - 3.5"x3.5" & 4"x4"

Price based on light coverage

	Price per unit					
	100	250	500	1000	2500	5000
18pt - 1 sided	.94	.53	.37	.34	.28	.23
18pt - 2 sided	1.37	.80	.60	.56	.43	.32
40pt - 1 sided	1.27	.75	.56	.52	.44	.38
40pt - 2 sided	1.91	1.21	.96	.76	.61	.49
60pt - 1 sided	1.77	1.01	.73	.60	.51	.44
60pt - 2 sided	3.03	1.77	1.31	1.08	.88	.74
80pt - 1 sided	---	---	.94	.79	.62	.53
80pt - 2 sided	---	---	1.48	1.46	1.09	.91

6F

- Multiple images: An extra charge of \$20.00 (G) is added per group run. Use the unit price for the total amount ordering. Contact us for more details.
- Packaging: 1 to 5 coasters per poly bag - \$.30 (G) per bag.
- Extra charges may apply when artwork has borders on both sides of coasters. Contact us for details.
- Colours darken when printed on kraft chip board. Large, solid areas can appear mottled because of the vellum surface. Black artwork reproduces the best.

Premium Coasters

- Price includes set up charges.
- Production time is 6 to 8 business days after artwork approval (production time may vary for larger orders).
- Call for pricing for custom shapes, larger quantities and offset printing.

Artwork Guidelines:

- Templates available on the Coaster page of our website.

Stock Shapes:

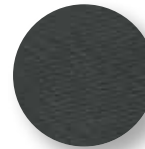
- Round - 3.5" & 4"
- Square with rounded corners - 3.5" & 4"
- Octagon - 4"



Digital printed in full colour (CMYK)

Rubber (1/8" thick)

	Price per unit					
	100	250	500	1000	2500	5000
Gloss laminate	1.44	1.15	1.08	.97	.93	.87
Matte textured laminate	1.65	1.35	1.28	1.16	1.11	1.05



Rubber

6F

Cork (1/8" thick)

	Price per unit					
	100	250	500	1000	2500	5000
Gloss laminate	2.26	1.92	1.85	1.65	1.59	1.53
Matte textured laminate	2.48	2.12	2.05	1.84	1.78	1.72

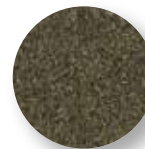


Cork

6F

Cork/Rubber Blend (1/8" thick)

	Price per unit					
	100	250	500	1000	2500	5000
Gloss laminate	2.27	1.93	1.86	1.66	1.60	1.54
Matte textured laminate	2.49	2.13	2.06	1.85	1.79	1.73



Cork/Rubber Blend

6F

- Multiple images: An extra charge of \$20.00 (G) is added per group run. Use the unit price for the total amount ordering. Contact us for more details.
- Packaging: 1 to 5 coasters per poly bag - \$.30 (G) per bag.



Premium Coasters

- Price includes set up charges.
- Production time is 6 to 7 business days after artwork approval (production time may vary for larger orders).

Artwork Guidelines:

- Templates available on the Coaster page of our website.

Hard Top (1/4" thick)

Rigid - domed look with cork/rubber blend

- 3 1/2" round

Digital printed in full colour (CMYK)



NEW - Lower Minimum

Price per unit

	25	50	100	250	500	1000	2500	5000
Gloss laminate	5.56	4.24	3.03	2.89	2.69	2.43	2.27	2.23
Matte laminate	5.61	4.29	3.08	2.94	2.74	2.48	2.32	2.28

6F

- Multiple images: An extra charge of \$20.00 (G) is added per group run. Use the unit price for the total amount ordering. Contact us for more details.
- Packaging: 1 to 5 coasters per poly bag - \$.30 (G) per bag.



Clear Acrylic (1/4" thick)

- 4" Square: Printable area 3 1/2" square

Digital printed in full colour (CMYK)

NEW - Lower Minimum

Price per unit

	25	50	100	250	500	1000	2500	5000
Square	5.42	4.05	3.24	2.72	2.52	2.40	2.34	2.31

6F

- Multiple images: An extra charge of \$20.00 (G) is added per group run. Use the unit price for the total amount ordering. Contact us for more details.
- Packaging: 1 to 5 coasters per poly bag - \$.30 (G) per bag.

